



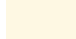
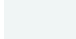


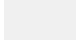
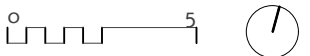
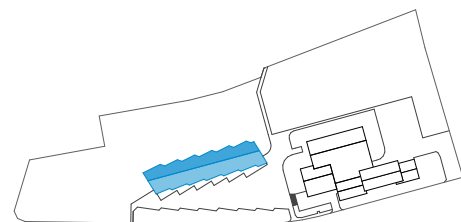
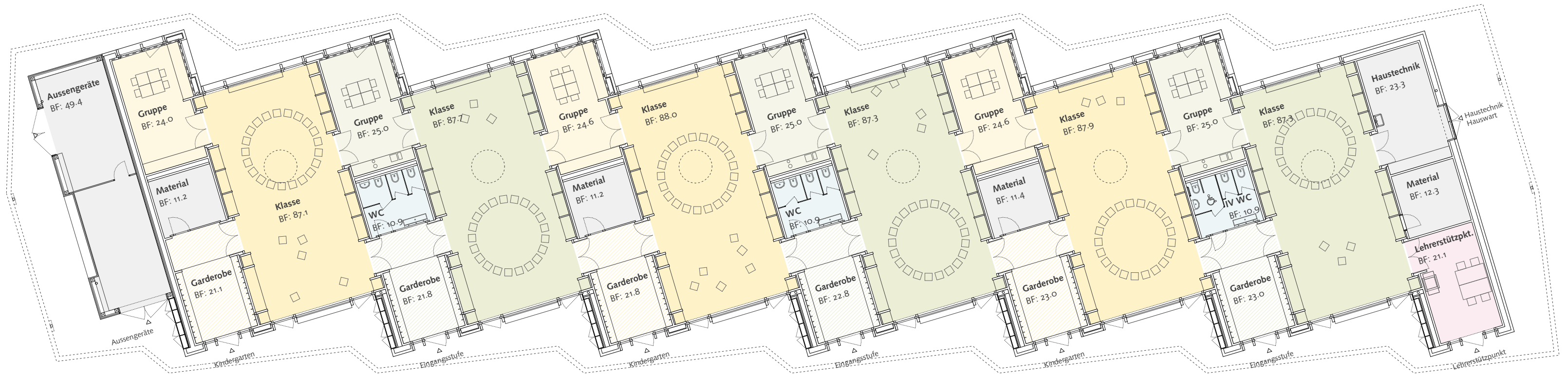


Eingangsstufe (ES)		Unterstufe (US)			
	Klassenraum		Klassenraum		Lehrpersonen
	Gruppenraum		Gruppenraum		Nassräume
	Garderobe		Garderobe		Nebenträume HT, HW



# 115 Erweiterung und Sanierung Schulanlage und Mehrzweckgebäude Grossaffoltern

Schulanlage Grossaffoltern, Schulhausstrasse 5, 3257 Grossaffoltern

Bauprojekt	Teilprojekt	<b>1 - Neubau Eingangsstufe/Kindergarten</b>	Plan-Nr.:	Masstab:	Format:	Datum:	Rev.:	Index:
<b>Nutzungsverteilung gedreht</b>			1-Ue-002.2	1:200	A3	28.08.2019	-	A
Architekten	Bienert Kintat Architekten, Aargauerstrasse 80, 8048 Zürich		Bauherrschaft	Gemeinde Grossaffoltern, Dorfstrasse 41, 3257 Grossaffoltern				